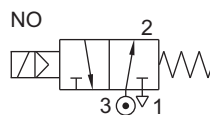


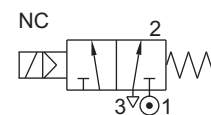
3/2 INTERNAL PILOT OPERATED, NC/ NO HIGH PRESSURE SOLENOID VALVE

TYPE	PRESSURE

TYPE	PRESSURE
31207	4 - 70 bar



TYPE	PRESSURE
31122	4 - 70 bar



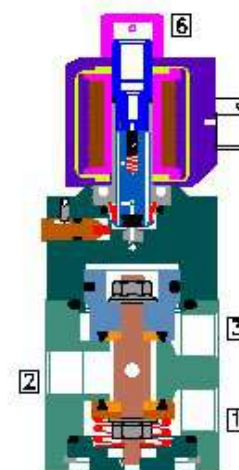
FEATURES

- Bubble tight shut off
- Mounts in any position
- Vibration resistance up to 9g
- Suitable for high speed cycling
- Speed up to 300 cycles/ min
- Life >3 million cycles
- Manual override optionally provided



WETTED PARTS

Code	B2	※
Body		SS 316
Internals		SS 316
Guide Assembly	SS 304	
Shadow-Ring	None	
Plunger, Insert	SS 430	
Spring	SS 302	
Seat, Seals	NBR, Viton, F.Silicon	
Fasteners	SS 304	



AMBIENT AND FLUID TEMPERATURE

-30 °C to 75 °C

SPECIAL VERSION AND SUFFIX

Suffix : (Valve) AM
Special version : (Solenoid) CO, FR, SS, LC

MEDIA

Air, Inert Gases

APPLICATION

Single acting actuator/ Cylinder, Control valve actuation

PORT CONNECTION

FUNCTION	INLET	OUTLET	EXHAUST	PILOT EXHAUST
NC	1	2	3	6
NO	3	2	1	6

Contact Rotex for

- Any other ambient, fluid temperature, media and application
- SIL3 approved valve
- Media like Water, Light Oil etc.



SPARES

(Refer page 25 for ordering code)

SPARE KIT	CODE
Seal Kit : Oring Set and Plunger Assembly	98
Repair Kit : Oring Set, Plunger Assembly, Fasteners, Springs, Manual Override, Piston Kit	99
Solenoid Kit : Solenoid, Gasket and Nut	34

APPROVAL

(★ applied for)

Approval	TYPE 4X, 6P	IP67	Ex d IIC T4 or T5 or T6 IP66	Ex ia IIC T6 IP67	DGMS	CCOE
		✓	✓	✓	✓	✓
		✓	✓	✓		
	✓		*			
			✓	✓		
			✓	✓		
			✓	✓		



3/2 INTERNAL PILOT OPERATED NC/ NO HIGH PRESSURE SOLENOID VALVE

SPECIFICATION

PORT CONNECTION			PRE-SURE bar		ORIFICE (mm)	FLOW FACTOR Kv (LPM OF WATER @ 1 bar ΔP)	VALVE TYPE	PILOT PRESSURE	BODY MATERIAL AND INTERNALS				SEALS			MANUAL OVERRIDE		SOLENOID ENCLOSURE				SUFFIX		POWER VA		CONSTRUCTION REFERENCE NUMBER		
SIZE	BSP(F)	NPT(F)	MINIMUM	MAXIMUM					ALUMINIUM	ALUMINIUM + SS	BRASS (STD. PORT NPT)	SS 316/CF8M (STD. PORT NPT)	NBR	Viton	EPDM	F.Silicon	PTFE+Viton	NIL	STAYPUT CUM MOMENTARY	MOMENTARY	FLYING LEAD	PLUG IN, IP67	SQ. PLUG IN, IP67	TERMINAL BOX IP67	EXPLOSION PROOF IIC, IP67		LARGE ENCLOSURE	SOLENOID SIZE

3/2 NORMALLY CLOSED

1/4"	2G	2R	4	70	7	18	31122							S8	×	M11	M4	25	T	E	18	✓	13	13	13	372
3/8"	3G	3R	4	70	10	38	31122							S8	×	M11	M4	25	T	E	18	✓	13	13	13	373
1/2"	4G	4R	4	70	16	75	31122							S8	×	M11	M4	25	T	E	18	✓	13	13	13	374
3/4"	6G	6R	4	70	20	110	31122							S8	×	M11	M4	25	T	E	18	✓	13	13	13	375
1"	8G	8R	4	70	25	185	31122							S8	×	M11	M4	25	T	E	18	✓	13	13	13	376

3/2 NORMALLY OPEN

1/4"	2G	2R	4	70	7	18	31207							S8	×	M11	M4	25	T	E	18	✓	13	13	13	372
3/8"	3G	3R	4	70	10	38	31207							S8	×	M11	M4	25	T	E	18	✓	13	13	13	373
1/2"	4G	4R	4	70	16	75	31207							S8	×	M11	M4	25	T	E	18	✓	13	13	13	374
3/4"	6G	6R	4	70	20	110	31207							S8	×	M11	M4	25	T	E	18	✓	13	13	13	375
1"	8G	8R	4	70	25	185	31207							S8	×	M11	M4	25	T	E	18	✓	13	13	13	376

SOLENOID 18

Cable Entry	T	Öc/A	E	Öc/A	ä
M20 x 1.5	FJ	fiTÜ	H	iiTÜ	iiSVTÜ
M25 x 1.5	F	ii		ii	iiSV
1/2" NPT	fi	fi bÜ	H	ii bÜ	iiSV bÜ

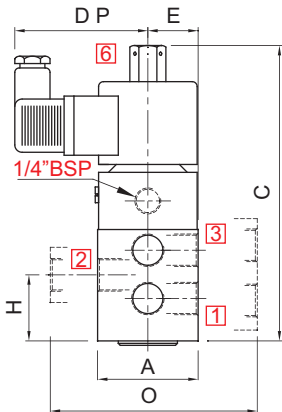
× = Do not specify when opted for. Refer Page # 22 for Value of ×
✓ = Options available

ORDERING CODE AND EXAMPLE VALVE + SOLENOID

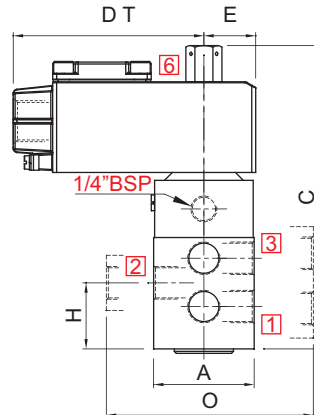
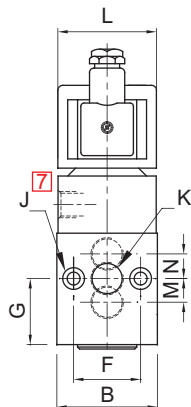
TYPE - SUFFIX - ORIFICE - PORT CONNECTION
BODY AND INTERNALS - MANUAL OVERRIDE - SEAL+
SIZE - VOLTAGE - CURRENT - SOLENOID ENCLOSURE
- APPROVAL - INSULATION - SPECIAL VERSION
e.g. 31122-10-3R+III-110V DC-39

DIMENSIONS

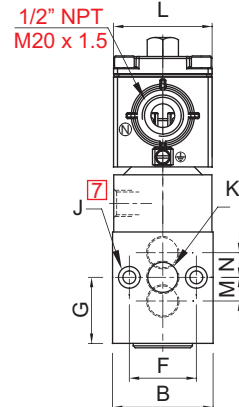
All Dimensions are in mm



PLUG IN SOLENOID TYPE 25



TERMINAL BOX/ Ex d LARGE ENCLOSURE, TYPE 16, 19, 37, 39, 58, 58LT



K (PORT SIZE)	A	B	C	DP	DT	E	F	G	H	J	L	P	LT	M	N	CONST. REF.
VALVE TYPE : 31122, 31207																
1/4"	51	51	154	68	97	26	34	34	34	M6	Ø50	50	12	12	372	
3/8"	61	61	165	68	97	30	34	36	36	M6	Ø50	50	14	14	373	
1/2"	81	81	187	68	97	40	50	48	48	M8	Ø50	50	18	18	374	
3/4"	94	81	204	68	97	40	50	58	58	M8	Ø50	50	24	24	375	
1"	115	128	217	68	97	40	60	58	58	M8	Ø50	50	24	24	376	

